

**Xtream**

Always safe



and protected!

**FLEXIBLE SYSTEM  
WIRE & WIRELESS  
BURGLAR ALARM**

Wherever you are, safety is always with you!



## XTREAM: when flexibility meets security!

XTREAM adapts the most advanced technology to your needs.

With XTREAM, you can control with few commands your home, your company, your activity. A smartphone or computer are all you need to live your security in complete freedom!

The multi-area management, the flexibility, the possibility of integrating XTREAM with other Building Automation systems, as well as the remote management of any single area, make XTREAM system able to meet any installation needs.



+



+



+



## USER INTERFACES

### ICE TOUCH SCREEN KEYPAD

With ICE everything is simple and easy thanks to the help in line. ICE uses NFC technology and integrated proximity reader. With ICE you visualize the temperature of the your environments with the Touch Screen display 4,3" with photo frame functions. Available also with black cover (ICE BL).



### A 600 EVO A 600 EVO Plus MULTIFUNCTIONAL LCD KEYPAD

Elegant keypad with large display and lateral leds.  
**A 600 EVO Plus** integrates audio output allowing real time vocal warning of any event programmed, a touch proximity key reader and volume control, illumination setting.

### A 500 - A 500 Plus A 500 Carbon SMART LCD KEYPAD

Compact keypad with elegant blue display, 32 characters LCD display + 7 system status LEDS.  
**A500 Plus** Integrates voice guide and NFC technology. Interchangeable covers. Available also with cover CARBON LOOK.



### A 300 - A300 Plus COMPACT LCD KEYPAD

Small keypad, partially recessed in type 503 junction box. Also available with blue backlight and cover gray color (A300 Plus)





# The AVS APP gives you all the security and freedom you desire.



## APP FOR END USER

App developed for the end user to control easily and intuitively your control panel, from everywhere and at any time you desire.

## VOICE ASSISTANTS



The MYAVSALARM APP is compatible with Google Home and Alexa

## AVS SERVER CLOUD

The AVS cloud allows a secure and reliable connection, constantly supervising the connection to Internet.

## PUSH-NOTIFICATIONS

The AVS Cloud is able to keep you informed on what is happening to your control panel, sending real time notifications of alarm, failure, login on your mobile.



## HOME AUTOMATION COMMANDS

A simple interface allows you to access, in simple and intuitive way to the home automation programmed functions (lights activation, roller shutter, automatic gate).



## VIDEO VERIFICATION

The APP permits the connection of video cameras IP ONVIF S - Mjpeg - RTSP for the video verifications in real time.



## SIMPLIFIED SCENARIOS

With only a click, you can manage many functionalities. With this function, it makes simpler also the most complex commands.



## QUICK ACTION

Simple and quick management of the control panel with the simplifications of the accesses and the activation of quick commands. Your telephone can be becoming a remote control.

## AVS CLOUD THE BEST CLOUD FOR YOUR SAFETY

The AVS Cloud allows a secure and reliable connection, constantly supervising Internet, sending real-time notifications of alarm, failure, login and inefficiency of the network on your mobile. The system works with encrypted protocols and the AVS servers are certified according to the ISO IEC 27001: 2013 standard, ensuring security at the highest levels.





NEW

# myAVS domotics



Versions available

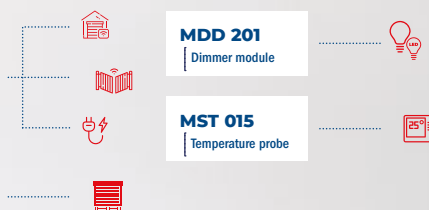
**MDS 201**  
1 relay module

**MDS 202**  
2 relais module

**MDR 201**  
Roller shutter  
module

**MDD 201**  
Dimmer module

**MST 015**  
Temperature probe



The smart, professional and secure management system to control houses and activities in real time, even remotely.



## WIRELESS SMARTHOME



Website

The **flexibility of the wireless technology**, combined with the small size of the dedicated modules, **allows to easily integrate Home Automation in any system**, ensuring more security, more comfort, total control of your home and with a consequent **reduction in energy consumption**.

The range of Home Automation modules includes 4 different models: 1 module having a power relay, 1 with 2 power relays, 1 module dedicated to shutter management and one for dimmer control (light).



Consumption control  
and Kw management

To avoid exceeding Kw  
and any power cuts



Temperature  
control

Temperature control  
of each room and  
schedule days and times



Easy and flexible  
installation

Easily installed in any  
junction box even in  
existing systems



For residential, commercial,  
industrial buildings

The bridge function  
(repeater) extend  
the wireless range

# Everything under control with the IP and wireless **video verification!**

The **VIDEO VERIFICATION** integrated in the AVS control panels allows an immediate visual control of the alarm events. With the XSAT WS4 VIDEO receiver and the new IP interface EWEB PLUS VIDEO, it is possible to combine the XTREAM control panel with video detectors with integrated JET PA WS 4 VIDEO camera and / or use up to 8 IP cameras with ONVIF (S) protocol.



## Complete autonomy

Thanks to the GSM 2G/4G communicator embedded in the control panel, internet network/router is not required. Integrated battery.



## Night vision

Day/night camera function with infrared illuminator.



## Integrated camera

Camera with 320x240 image resolution – recording of 10" video with audio

## FOR CENTRAL MONITORING STATION



### MY AVS VIGILANT

Video verification management software for Central Monitoring Station

## FOR END-USER



### THE CONTROL PANELS

Transfers images and audio to the CLOUD MY AVS through the GPRS / 4G connection or via EWEB PLUS VIDEO network board.

WIRELESS VIDEO VERIFICATION

IP VIDEO VERIFICATION



### XSAT WS4 VIDEO

Sends the images and audio to the XTREAM control panels, through the RS 485 serial bus.



### JET PA WS4 VIDEO

In case of alarm, the detector transfers the images and audio detected to the XSAT WS 4 VIDEO satellite.



### EWEB PLUS VIDEO

Optional board LAN/Ethernet with VIDEO.

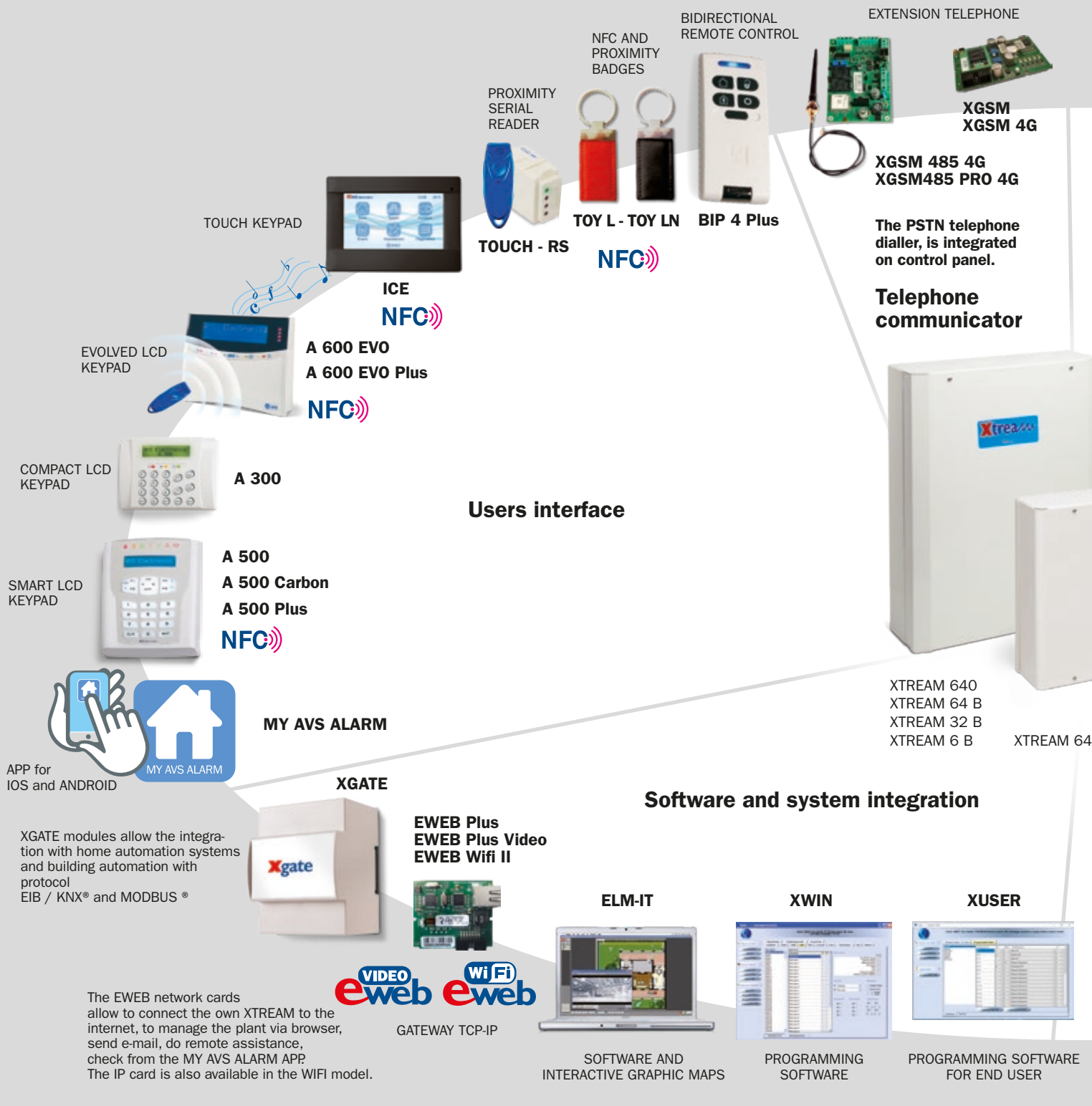


### PUSH NOTIFICATION



### APP MY AVS ALARM

The end-user receives the PUSH notification to view the video of the alarm that happened.



## USERS INTERFACE

### BIP 4 Plus

#### BIDIRECTIONAL REMOTE CONTROL

The keyholder remote control, simple and versatile, can operate arming and disarming emergency calls and O.C. outputs. It features 8 easily-programmable commands in order to be "customized" thanks to rolling-code transmission, according to the user needs.



### TOY L - TOY LN

#### NFC AND PROXIMITY TAG

Key ring proximity tag, realized in metal and leather. NFC technology. Compatibility with ICE and A500 PLUS Keypads.



### RS - TOUCH

#### PROXIMITY KEY

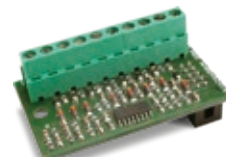
For a quick and intuitive management of the control panel.



### XEXP 8

#### ZONES EXTENSION

From 8 to 16 INPUTS



### XSAT 2 - XSAT 8

#### EXTENSION MODULES FOR SINGLE OR DOUBLE BALANCED ZONES

From 2 to 20 INPUTS  
From 8 to 16 OUTPUTS





ZONES  
EXTENSION  
MODULE



**XEXP 8**

BOARD FOR  
PERIPHERAL  
EXTENSION  
IN RS485



**XSAT HP  
XSATHP MINI**

ZONE  
EXTENSION  
AND  
ADDRESSING  
MODULE



**XSAT MINI**

EXTENSION  
MODULES FOR  
SINGLE OR  
DOUBLE  
BALANCED  
ZONES



**XSAT 2  
XSAT 8**

SUPPLY UNIT WITH  
INTEGRATED ZONES/  
OUTPUTS EXTENSION  
BOARD



**XSAT PW3  
XSAT PW5**

BOARDS FOR ZONES  
EXTENSION AND  
OUTPUTS



**XSAT36**

**AMPLIBUS**



ISOLATOR AND  
AMPLIFIER OF  
SERIAL LINE

## System extension

**POWER 3Q  
POWER 5Q**



ADDITIONAL  
SUPPLY UNITS



**XTREAM 32 - 6**



**XSAT WS4  
PRO**



BIDIRECTIONAL  
RADIO  
EXTENSION  
MODULE



**XSAT WS4 VIDEO**

Expansion module/repeater  
on BUS RS485 for wireless  
bidirectional devices and  
video detector

## Serial sirens

**CITY HP  
TS 85 HP**



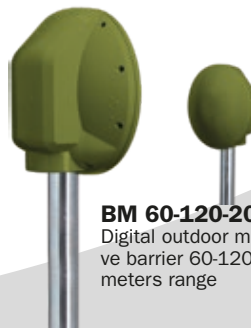
LED SIRENS ON  
BUS RS485



**OutSpider PA**  
Digital double PIR  
detector

**OutSpider DT**  
Double PIR and  
double digital  
microwave channel  
detector

## Serial detectors



**BM 60-120-200 HP**  
Digital outdoor microwa-  
ve barrier 60-120-200  
meters range

**JET DT HP  
JET DT HP PLUS**  
Digital dual  
technology detector  
with RS485 BUS



**ONE DT HP  
ONE PA HP**  
Outdoor dual technology  
detector with RS485 BUS

**RS485  
Connection**

## DIGITAL EXTENSION



**XSAT HP  
XSATHP MINI**

BOARD FOR PERIPHERAL  
EXTENSION IN RS485  
Available also in small model  
XSATHP MINI.

**XSAT 36**

BOARDS FOR ZONES  
EXTENSION AND OU-  
TPUTS

- From 10 to 20 INPUTS
- 8 OUTPUTS
- 36 INPUTS (with XEXP8)

**XSAT PW3 (Q)  
XSAT PW5 (Q)**

SUPPLY UNIT WITH  
INTEGRATED ZONES  
OUTPUTS EXTENSION  
BOARD

Available also in metal  
box version.



## EXTENSION GSM TELEPHONE

**XGSM - XGSM 4G**

GSM TELEPHONE

DIALLER - PLUG-IN

Communications  
protocols: vocal,  
digital, TCP-IP Sending  
and receiving of SMS  
messages. Mobile APP  
Management with MY  
AVS ALARM.



## EXTENSION TEL. GSM DUAL SIM



**XGSM 485**

**XGSM485 PRO 4G**

RS485 GSM TELEPHONE DIALLER

Communications protocols: voice and  
SMS messages. Sending and receiving  
of SMS messages. Connection: RS485  
serial. Mobile APP  
Management with  
MY AVS ALARM.





## RS485 DIGITAL DEVICES

A complete range of highly performing RS485 serial BUS devices for a safety, reliable XTREAM system.

### XSAT HP

#### XSAT HP MINI

##### DIGITAL EXPANSION

XSAT HP MINI is a small-dimensions RS485 hub used to connect RS485 sensors (Outspider, ONE HP, BM HP, JET HP) up to a maximum of 32 devices. The large version - XSAT HP - manages: 3 or 5 Amp additional supervised power supply, 2 RS485 buses of sensors, remote reprogramming by build-in PSTN phone line and optional GSM.



### BUS OUTDOOR SIRENS

#### TS85 LED HP

##### RS485 SIRENS

Directly connected to the XTREAM RS485 bus, the LED HP siren series allow the built-in management of both visual and acoustic information. Adjustable sound volume, 8 different alarm tonalities for 2 different events, one main alarm LED and 2 extra information LEDs. Accelerometer sensor for tamper, vibration and choc. Exists in 100% painted-steel housing / 100% stainless steel housing / polycarbonate housing (numerous colors available) with second inner cover in painted-steel. Programmable from keypad or by computer (also remotely).

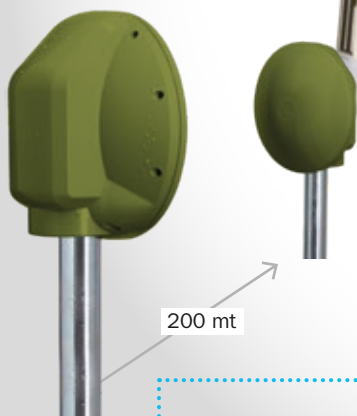


Available in different models and colours

### BM 60-120-200 HP

#### DIGITAL MICROWAVE BARRIER

Digital microwave barrier to create perimeter protection of few 100 meters up to more kilometers. Automatic Gain Compensation, noise reduction technology, false alarms filter. Also programmable by software locally or remotely. Can be directly connected by RS485 to CAPTURE or through XSAT HP/MINI. Available also in 230AC (BM HP VAC). Detection range: 60/120/200 m.



### JET DT HP PLUS

#### DUALTECH INDOOR DIGITAL DETECTOR

Microwave planar antenna with Fresnel lens passive Infrared sensor, programmable in AND/OR/SECURITY mode. Presents a look down lens to detect also vertically below the sensor. Pet immunity programmable up to 24 kg. An active IR circuit protects it from any masking attempt. The accelerometer unit detects the tamper actions. Alarm database with date/time/temperature/signal curves. Also programmable by software remotely. Can be directly connected by RS485 to CAPTURE or through XSAT HP/MINI. Detection range: 15 meters. Opening angle: 90° mounting height: 2.2 meters



### OUTSPIDER PA HP

#### DIGITAL OUTDOOR DOUBLE PASSIVE DETECTOR

Digital double IR outdoor sensor. High pet immunity, anti-masking by active IR. Also programmable by software locally (need USB-OUT cable) or remotely. Can be directly connected by RS485 to XTREAM or through XSAT HP/MINI. Detection range: 15 to 23 m. Opening angle: 5° to 90° Mounting height: 2.0/2.7 m.



### OUTSPIDER DT HP

#### DIGITAL OUTDOOR MULTI-CHANNEL DETECTOR

Digital double IR and dual microwave outdoor detector. The Doppler effect created by the double microwave antenna reduces drastically the false alarms from the vegetation environment and cancel all solar troubles. High pet immunity, anti-masking by active IR. Also programmable by software locally (need USB-OUT cable) or remotely. Can be directly connected by RS485 to XTREAM or through XSAT HP/MINI. Detection range: 15 to 23 m. Opening angle: 5° to 90° Mounting height: 2.0/2.7 m.

### ONE DT HP

#### DOUBLE TECH OUTDOOR CURTAIN DETECTOR

Dual technology curtain digital outdoor detector with Fresnel lens. Completed with double antimasking solution, accelerometer for tamper detection, pet immune. Also programmable by software remotely. Can be directly connected by RS485 to XTREAM or through XSAT HP/MINI. Detection range: 12 m. Opening angle: 5° Mounting height: 2.2 m.



### ONE PA HP

#### PASSIVE IR OUTDOOR CURTAIN DETECTOR

Fresnel lens passive IR curtain digital outdoor detector. Completed with IR antimasking solution, accelerometer for tamper detection, pet immune. Also programmable by software remotely. Can be directly connected by RS485 to XTREAM or through XSAT HP/MINI. Detection range: 8 m. Opening angle: 5° Mounting height: 2.2 m.







## BIDIRECTIONAL WIRELESS DEVICES

The bidirectional wireless technology GFSK FM 868 Mhz perfectly integrated into the system XTREAM that meets the highest standards of PROFESSIONAL SAFETY.

### CITY WS 4 LED OUTDOOR SIREN

Available in carbon  
look version (C)



### GHOST WS 4 PLUS

BIDIRECTIONAL  
WIRELESS  
TRANSMITTER  
FOR DOORS AND  
WINDOWS  
With two-channels  
magnetic contact  
and inertial  
detector



### WIC 4 PLUS WIC 4 MINI PLUS

WIRELESS MAGNETIC  
CONTACT DOUBLE  
CHANNEL WITH INERTIAL  
Available also without the  
inertial **WIC 4 - WIC 4 MINI**  
and in brown color (B) -  
black color (N)



### JET 360 WS 4 INDOOR CEILING MOUNTING PIR



### SD4 WS INDOOR OPTICAL SMOKE DETECTOR WIRELESS



### JET DT WS 4 INDOOR DOUBLE VOLUMETRIC TECHNOLOGY DETECTOR Available also in PIR **JET PA WS 4**



### TS22 WS4 INDOOR SIREN



### XSAT WS 4 PRO BIDIRECTIONAL RADIO EXTENSION MODULE

### JET PA WS 4 VIDEO PASSIVE INFRARED DETECTOR

with antimasking and  
camera/audio integrated



### XSAT WS 4 VIDEO EXPANSION MODULE/ REPEATER ON BUS RS485 for wireless bidirectional devices and video detectors



### BIP 4 PLUS BIDIRECTIONAL REMOTE CONTROL

Available also in  
Carbon Look (C)



### ZEN 4 PLUS BLACK BIDIRECTIONAL MINI REMOTE CONTROL with 4 functions.

### SPECTRUM DT WS AM 4 DOUBLE TECHNOLOGY OUTDOOR DETECTOR

Available in double side version  
WALL **SPECTRUM PA WS WALL 4**  
and **SPECTRUM PA WS WALL AM 4**



### OUTSPIDER DT WS 4 DOUBLE TECHNOLOGY OUTDOOR DETECTOR

Available also in double PIR  
**OUTSPIDER PA WS 4**



### MDR 201 ROLLER SHUTTER MODULE

Available different  
home automation  
modules:  
**MDS 201,**  
**MDS 202,**  
**MDD201**

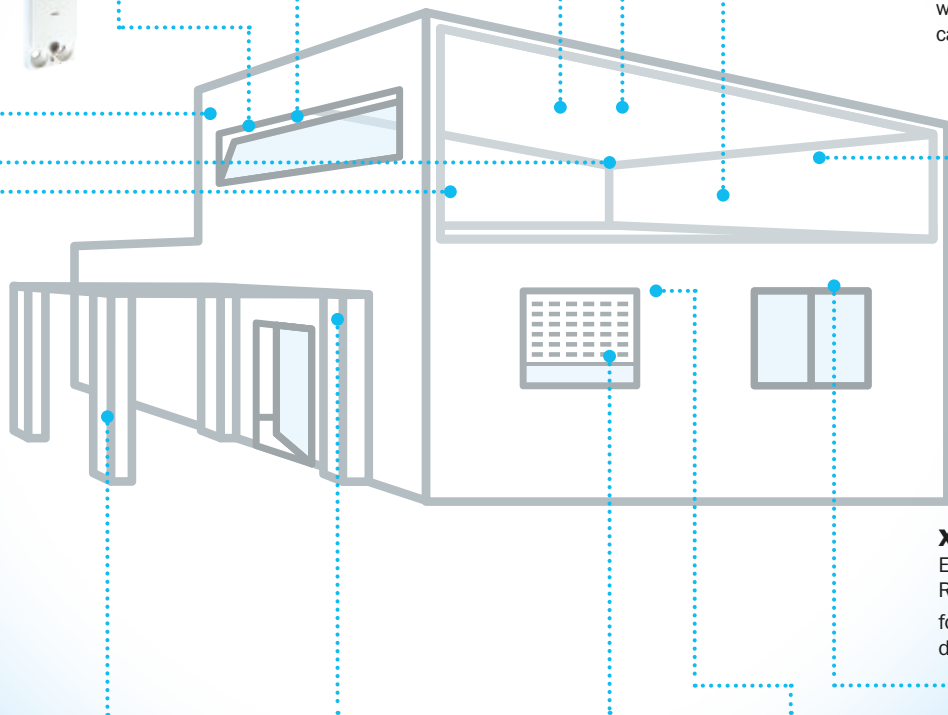


### ONE PA WS 4 OUTDOOR CURTAIN DETECTOR



### WING 4 WS INDOOR CURTAIN DETECTOR

For the protection of  
windows and doors.  
Available also with the  
antimasking **WING 4 MWS**



FUNCTIONAL FEATURES	XTREAM 6 EVO	XTREAM 32 EVO	XTREAM 64 EVO	XTREAM 640
<b>STRUCTURE</b>				
Partitions	8	8	8	64
Arming for partitions	4	4	4	4
Patrol partition	2	2	2	4
<b>INPUTS - OUTPUTS</b>				
Programmable software zones (maximum expansion)	10	32	64	640
Inputs/Control panel inputs	6	6	6	10
Inputs on plug-in extension board (mod: XEXP8)	optional	optional	optional	optional
Inputs dedicated to anti-tampering	✓	✓	✓	✓
Input management: BALANCED and SWITCH ALARM	✓	✓	✓	✓
Configuration for single zone	30	30	30	30
Double zone profile	✓	✓	✓	✓
Mapping software zones-physical inputs	✓	✓	✓	✓
AND ZONE function	✓	✓	✓	✓
Input expansion on RS485	✓	✓	✓	✓
Radio expansion	✓	✓	✓	✓
Additional inputs with double zones function	✓	✓	✓	✓
Open collector outputs (maximum expansion)	16	72	72	250
Relay outputs with positive security (maximum expansion)	9	9	9	32
<b>CODES AND KEYS</b>				
Installer code	1	1	1	1
User codes and emergency codes	64	64	64	512
Time slot user management	✓	✓	✓	✓
NFC keys/tags with user recognition	64	64	64	512
Remote controls with user recognition	64	64	64	512
Customizable user profile	8	8	8	32
<b>USER INTERFACES</b>				
Management keypads	8	8	8	32
RS Series Transponder Addressable Proximity Readers	16	16	16	32
Input for universal electronic key	✓	✓	✓	✓
<b>TCP-IP NETWORK CONNECTIVITY</b>				
Communication interface with other systems	optional	optional	optional	optional
WEB server interface and TCP-IP network	optional	optional	optional	optional
My Avs Alarm App Management - Remote management via TCP/IP	✓	✓	✓	✓
<b>SYSTEM DIAGNOSTICS</b>				
Check for: System consumption / fuse status / serial BUS status	-	-	-	✓
Controls and MICROPROCESSOR SUPERVISOR	✓	✓	✓	✓
<b>TELEPHONE COMMUNICATOR</b>				
PSTN Dialler	-	-	-	✓
GSM telephone dialler sending vocal protocols/digital protocols and sms - TCP/IP/e-mail	optional	optional	optional	optional
Text-to-speech with pre-recorded vocabulary library with 40 custom messages	optional (mod.Xsint)	optional (mod.Xsint)	optional (mod.Xsint)	integrated
<b>REMOTE TELEPHONE CONTROL (RTC)</b>				
Telephone numbers	16	16	16	64
Interactive voice with online help for complete remote system management with telephones (DTMF)	optional	optional	optional	✓
Available protocols: Digital / Voice / Digital-IP / e-mail	✓	✓	✓	✓
Auto test call to check system functionality	✓	✓	✓	✓
Dynamic management of PSTN / GSM dialler	-	-	-	✓
<b>TIME PROGRAMMER</b>				
Weekly timer	✓	✓	✓	✓
Holiday management	20	20	20	20
Daily Operations: Partitions On/Off	✓	✓	✓	✓
Outputs: on/off. Activation Alerts	✓	✓	✓	✓
Special user enabling: enabling to activate the extraordinary	✓	✓	✓	✓
Enabling to forced disarming	✓	✓	✓	✓
<b>VARIOUS</b>				
RS485 Serials	1	1	1	3
Additional power supply control on RS485	✓	✓	✓	✓
Non-volatile event memory	1000	1000	1000	2000
Battery charging limitation	✓	✓	✓	✓
Allocable battery	Up to 7Ah	Up to 7Ah	Up to 7Ah	-
<b>SYSTEM PROGRAMMING AND CONFIGURATION</b>				
USB connection	✓	✓	✓	✓
XWIN: Local and remote programming software with REAL TIME function	✓	✓	✓	✓
<b>HOME AUTOMATION* - with XSAT WS4 - XSAT WS4 PRO - XSAT WS4 VIDEO</b>				
N. modules	16	64	64	160
N. rooms	8	16	16	28

\*needs satellite radio

## PROGRAMMING SOFTWARE

### XWIN

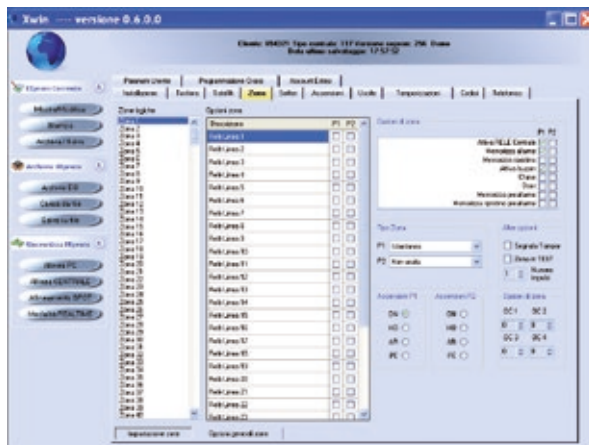
XWIN is the advanced software for full setting of Xstream control panel both in direct connection by use of USB cable and in remote way by use of an universal 56K modem or by use of GSM channel. XWin allows updating of control panel firmware with direct connection to control panel via USB door. Software also gives possibility to visualize system status in real time, providing information on consumption of control panel as well as on the status of various detectors.

Furthermore, it is possible to have complete control of inputs and outputs status and it is also possible to intervene in local or remote way, arming/disarming the system.

All operations are subject to an enabled User code. The REAL TIME mode is the new dynamic up-downloading of AVS allowing to monitor and manage any single system at 360°.

### SYSTEM DATA

- Windows: XP SP2® - VISTA®  
Windows 7-8-10
- modem compatibility:  
modem standard V.90
- control panel compatibility: XTREAM



## TECHNICAL FEATURES

	Type	Zone	Power Supply	Power consumption	Dimensions LxHxP	IMQ	INCERT	CE	Wireless
<b>CONTROL PANELS</b>									
XTREAM 640	Control panels	from 10 to 640	230Vac - 3,4A	0,8 A	330 x 420 x 107	GRADE 3	✓	✓	
XTREAM 64 B	Control panels	from 6 to 64	230Vac - 3,4A	0,8 A	330 x 420 x 107	GRADE 2	✓	✓	
XTREAM 32 B	Control panels	from 6 to 32	230Vac - 3,4A	0,8 A	330 x 420 x 107	GRADE 2	✓	✓	
XTREAM 6 B	Control panels	from 6 to 10	230Vac - 3,4A	0,8 A	330 x 420 x 107	GRADE 2	✓	✓	
XTREAM 64	Control panels	from 6 to 64	230Vac - 1,7A	0,4 A	321 x 279 x 83	-	-	✓	
XTREAM 32	Control panels	from 6 to 32	230Vac - 1,7A	0,4 A	275 x 279 x 99.5	-	-	✓	
XTREAM 6	Control panels	from 6 to 10	230Vac - 1A	0,25 A	275 x 279 x 99.5	-	-	✓	
<b>KEYPADS</b>									
ICE - ICE BL	Keypad TOUCH 4,3"	1	13,8 Vdc	300 mA (max)	130 x 91 x 16	-	-	-	
A300 - A300 PLUS	Keypad	1	13,8 Vdc	70 mA (max)	120 x 91 x 15	✓	✓	✓	
A500 - A500 PLUS	Keypad	1	13,8 Vdc	90 mA (max)	114 x 135 x 35	-	-	✓	
A600 EVO - A600 EVO PLUS	Keypad	1	13,8 Vdc	170 mA (max)	153 x 120 x 35	✓	✓	✓	
<b>KEYS AND PROXIMITY READERS</b>									
RS	Proximity readers	-	13,8 Vdc	30 mA (max)	45 x 44 x 21	✓	✓	✓	
TOUCH	Proximity tag	-	-	-	22 x 60 x 5	✓	✓	✓	
TOY	NFC proximity tag	-	-	-	-	✓	✓	✓	
<b>ZONE EXPANSION MODULES</b>									
XSAT MINI	Zone expansion module	3	13,8 Vdc	20 mA (max)	40 x 25 x 13	✓	✓	✓	
XEXP8	Zone expansion plug-in module	8	13,8 Vdc	5 mA (max)	55 x 33	✓	✓	✓	
XSAT8	Zone expansion in/out module	10 in / 8 out	13,8 Vdc	40 mA (max)	80 x 55	✓	✓	✓	
XSAT2	Zone expansion in/out module	2 in / 16 out	13,8 Vdc	32 mA (max)	80 x 55	✓	✓	✓	
XSAT36	Zone expansion module	from 10 to 18	13,8 Vdc	50 mA (max)	180 x 130 x 30	✓	✓	✓	
XSATHP	RS485 zone expansion module	32	13,8 Vdc	250 mA (max)	230 x 140 x 25	-	-	-	
XSATHP MINI	RS485 zone expansion module	32	13,8 Vdc	75 mA (max)	80 x 55	-	-	-	
XSATWS 4 PRO / VIDEO	Wireless zone expansion module	32	13,8 Vdc	45 mA (max)	129,5 x 16 x 92,5	✓	✓	✓	✓
<b>COMMUNICATIONS MODULES</b>									
PSNT	Telephone module	-	Integrated to the control panel		-	✓	✓	✓	
XGSM	GSM telephone dialler	-	13,8 Vdc	400 mA (max)	60 x 52 x 25	✓	✓	✓	
XGSM 4G	LTE/4G telephone dialler	-	13,8 Vdc	400 mA (max)	60 x 52 x 25	✓	✓	✓	
XGSM485/PRO 4G	Telephone dialler RS485 BUS-4G	-	13,8 Vdc	320 mA (max)	75 x 121 x 25	-	-	✓	
XSINT	Digital vocal message module	-	13,8 Vdc	50 mA (max)	-	✓	✓	✓	
<b>BOARD LAN/ETHERNET/WI-FI</b>									
EWEB PLUS	IP LAN connection	-	13,8 Vdc	80 mA (max)	-	-	-	✓	
EWEB PLUS VIDEO	IP LAN connection	-	13,8 Vdc	80 mA (max)	-	-	-	✓	
EWEB WIFI II	IP WI-FI connection	-	13,8 Vdc	100 mA (max)	-	-	-	✓	2,4 GHz 802.11 g/n
XGATE	IP WI-FI connection	-	5 Vdc	100 mA (max)	4 DIN modules	-	-	✓	
<b>POWER SUPPLY UNITS</b>									
XSAT PW3Q	Power supply unit with zones	da 10 a 18	230Vac - 3,4A	0,8 A	300 x 420 x 107	✓	✓	✓	
XSAT PW5Q	Power supply unit with zones	da 10 a 18	230Vac - 5,1A	1,2 A	300 x 420 x 107	-	-	✓	
POWER 3Q	Power supply unit in box	-	230Vac - 3,4A	0,8 A	300 x 420 x 107	✓	✓	✓	
POWER 5Q	Power supply unit in box	-	230Vac - 5,1A	1,2 A	300 x 420 x 107	-	-	✓	
<b>ACCESSORIES</b>									
AMPLIBUS	Insulator RS485	-	13,8 Vdc	30 mA (max)	80 x 55	-	-	✓	
PWOUT	Power lines partitor	-	13,8 Vdc	10 mA (max)	80 x 55	-	-	✓	
XMR 2 - MR 4 - MR 8	Relay module	-	13,8 Vdc	140 mA (max)	-	✓	✓	✓	

## PROGRAMMING SOFTWARE

### ELM

#### SOFTWARE AND INTERACTIVE GRAPHIC MAPS MANAGEMENT OF IP VIDEO IMAGES

The ELM software, combined to XLINK, enables the display or the interactive management on PC of all information relative to the system status with the visualization of images (.wmf / .jpg) from video cameras connected in the TCP-IP network. The system will thus be always under control and we will also have constant information on activations and on the status of active outputs, with which it is possible to activate or deactivate the lights, irrigation, and other.

The system is completed by the integration of IP video cameras, enabling the acquisition of video footage. Also the possibility to active the different use licenses makes ELM a management instrument suitable for multiple use contexts.

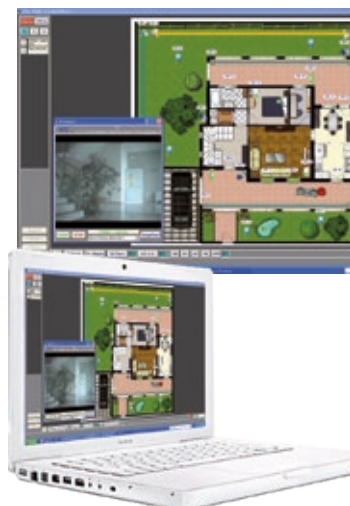
#### SYSTEM DATA

- Windows XP SP2 (Home or Professional) or Superior, Windows Vista SP1 © or superior, Windows 7 © , 1024 RAM - Celeron M or superior - 1 GB free on disk - color monitor at 16 bit with resolution 1024x768 or superior - Microsoft Internet Explorer 6.0© or superior - Microsoft Outlook © or other compatible mail MAPI management program.

#### LICENSE CONDITIONS

- The software is supplied by AVS Electronics in limited version. This version allows a connection to the system in a time lapse of maximum 2 - 3 minutes. The system remains connected in unlimited way if coupled to one of the two possible licenses.
- LIC-ELMXLB: Xstream system – limited to 640 zones bi-directional
- LIC-ELMXLV: Xstream system, limited to 640 zones – visualization and graphic maps only.

**NOTE:** all functions are available in addition to the evolved systems of AVS Electronics





**xtrea**

**The flexible control panel**



**AVS ELECTRONICS S.p.A.**  
 Via Valsugana 63  
 35010 Curtarolo (PD) - Italy  
 Tel. +39 049 9698 411  
 Fax +39 049 9698 407  
[avs@avselectronics.it](mailto:avs@avselectronics.it)  
[www.avselectronics.com](http://www.avselectronics.com)



FOLLOW US

